

Press Release

March 24, 2026



Yokohama Museum of Art Collection Exhibition April 25 – June 28, 2026

Landscapes to View, Landscapes to Consider



SEINO Yoshiko, *Yamanashi* (from the series "Emotional Imprintings"),
1996, chromogenic print, 37.5×55.2cm, Donated by Mr. Seino Ryomin and Ms. Seino Noriko

Exhibition Overview

The Yokohama Museum of Art collection contains approximately 15,000 works dating from the late 19th century, when the Port of Yokohama first opened, to the present day. Collection exhibitions present these works from a range of perspectives, with each installment offering a fresh way to encounter and appreciate the museum's holdings.

This exhibition, titled *Landscapes to View, Landscapes to Consider*, brings together depictions of landscapes from the 19th through the 21st centuries. Today, the idea of “landscape” extends beyond natural scenery to include the built environments that shape our daily lives. As seen in Surrealism, landscape is not limited to what we see before our eyes, and can also take the form of projections of our inner world, including dreams, fantasies, and the unconscious. Each of us responds to landscape in our own way, shaped by our perceptions, but we can also approach landscape intellectually and consider how it connects to culture, society, and politics. How have artists and photographers engaged with landscapes, and how have they interpreted them in their art? The exhibition reexamines the theme of landscape from the perspectives of “nature,” “the city” and “the unconscious and reality.”

Also, the “Highlights” section presents a selected group of outstanding works from the Yokohama Museum of Art collection. Bringing together works by artists connected to Yokohama as well as by major figures in Western art such as Kandinsky, Picasso, and Dali, it offers an opportunity to experience the richness of the collection.

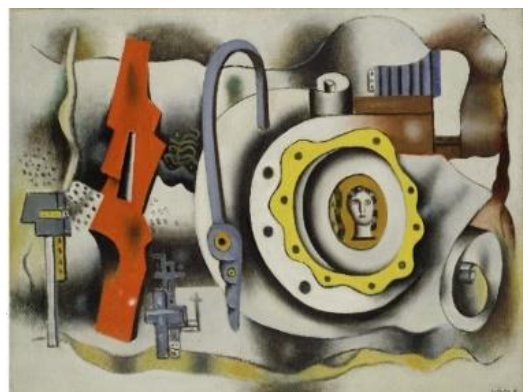
In addition, as the second installment of the Opening Dialogues program launched in fiscal 2025, the collection exhibition includes *Kamata Yusuke: A Vision for the Two Landscapes*.



Paul CÉZANNE, *Mont Sainte-Victoire Seen from Gardanne*, 1892-95, oil on canvas, 73.0×92.0cm



Eugène ATGET, *Versailles, "Effet d'Orage"*, 1903 (printed in 1977), gelatin silver print, 17.7×23.6cm



Fernand LÉGER, *Composition*, 1931, oil on canvas, 66.0×92.0cm

In connection with both the landscape-focused collection exhibition and the concurrent special exhibition *Imamura Shiko: A Revolutionary Innovator of Nihonga*, Kamata Yusuke will present new work focused on the influential businessman Hara Sankei and his connection to Yokohama's local and global histories.

Exhibition Highlights

1. Connection with the concurrent special exhibition *Imamura Shiko: A Revolutionary Innovator of Nihonga*

Imamura Shiko brought a distinctive approach to landscape painting, drawing on nanga (a style of Japanese landscape painting established in the mid-18th century and influenced by works from China's Jiangnan region) and Impressionism. The collection exhibition features a wide range of landscape works from Japan and abroad, dating from the late Meiji era (1868–1912), when Imamura was active, through the Taisho era (1912–1926) and thereafter.

2. New Acquisitions on View

A selection of recently acquired works related to landscape will be shown to the public for the first time.

3. Highlights Presented in a Distinctive Gallery Setting

Visitors can view outstanding works at their leisure in a gallery distinguished by its high ceilings and striking cylindrical space.



TOMIYAMA Taeko, *Small Mine*,
1953, oil on canvas, 60.5×72.5cm,
Donated by Ms.Sakata Natsume

Artists

“Landscapes to View, Landscapes to Consider”

Eugène ATGET, Ansel ADAMS, Max ERNST, Alfred STIEGLITZ, Paul CÉZANNE, Yves TANGUY, Felice BEATO, René MAGRITTE, Fernand LÉGER, USHIDA Keison, KIMURA Shohachi, KATAOKA Tamako, SEINO Yoshiko, TAKAHASHI Yuichi, TOMIYAMA Taeko, NAKAHIRA Takuma, YONEDA Tomoko

“Highlights”

Wassily KANDINSKY, Salvador DALÍ, Pablo PICASSO, Constantin BRANCUSI, NARA Yoshitomo



Wassily KANDINSKY, *Red in Nets*,
1927, oil on cardboard, 61.0×49.0cm

Related Programs

Gallery Talk

Curators and educators will talk about selected works from a range of perspectives, offering insights on their key features and how to appreciate them. Details will be announced on the museum’s website as soon as they are confirmed.

Exhibition Outline

Title	Yokohama Museum of Art Collection Exhibition Landscapes to View, Landscapes to Consider
Venue	Yokohama Museum of Art (3-4-1, Minatomirai, Nishi-ku, Yokohama) Gallery 3, 4, 5
Dates	April 25 (Sat.) – June 28 (Sun.), 2026
Open Hours	10:00-18:00 *Admission until 30 minutes before closing.
Closed	Thursdays *Open during Golden Week on April 30 and May 7
Organized by	Yokohama Museum of Art (Yokohama Arts Foundation)
Tickets	Adults: ¥500 (¥400) / University students: ¥300 (¥240) / High school and Junior high school students: ¥100 (¥80) / Children under 12: Free *()= Group of 20 or more (pre-booking required) *Free admission for high school and younger students with valid ID on every Saturday. *Visitors with disabilities and one caregiver accompanying them are admitted free of charge (Please present a certificate at the entrance). *The ticket for the “Imamura Shiko: A Revolutionary Innovator of Nihonga” also gives admission to the “Collection Exhibition” and “Opening Dialogues” for the same day. *Visitors can also enjoy the ongoing “Collection Exhibition” in Jiyu Area (free admission) .
Website	https://yokohama.art.museum/eng/exhibition/202604_collection/

Contact Iwamiya (Ms.) , Shitani (Ms.) , Takano (Ms.)
 Public Relations, Yokohama Museum of Art
 3-4-1, Minatomirai, Nishi-ku, Yokohama, 220-0012 JAPAN
 TEL : +81(0)45 221 0319 FAX : +81(0)45 221 0317 Email : pr-yma@yaf.or.jp

Press Image Request