

July 13, 2019

30th Anniversary of the Yokohama Museum of Art,
**Masterpieces from the Musée de l'Orangerie,
Jean Walter and Paul Guillaume Collection**

Venue: Yokohama Museum of Art

Dates: September 21 (Sat.), 2019 - January 13 (Mon.), 2020



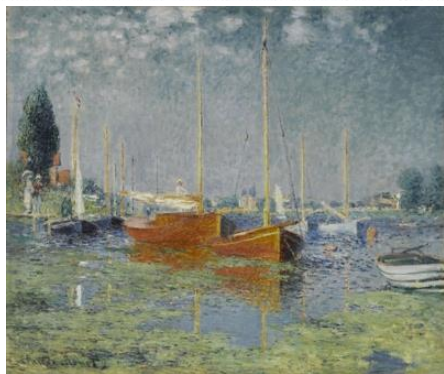
Auguste RENOIR
Young Girls at the Piano, ca. 1892,
Oil on canvas, 116.0 x 81.0 cm
Photo © RMN-Grand Palais (musée de l'Orangerie) /
Franck Raux / distributed by AMF

In celebration of its 30th Anniversary, the Yokohama Museum of Art is presenting *Masterpieces from the Musée de l'Orangerie, Jean Walter and Paul Guillaume Collection*.

The elegant Musée de l'Orangerie, housed in a redesigned orangery on the bank of the Seine, is renowned for its collection of Impressionist and École de Paris works amassed by the art dealer Paul Guillaume. Containing such masterpieces as Renoir's *Young Girls at the Piano* as well as famed works by Matisse, Picasso, and Modigliani, it is regarded as one of Europe's finest painting collections.

Paul Guillaume began to acquire works for his own collection while working as an art dealer in early 20th-century Paris, a gathering place for talented young artists. Guillaume died at the height of his career without realizing his plan of founding a private art museum, and his wife Domenica continued to build and transform the collection. On acquiring the collection, named the "Jean Walter and Paul Guillaume Collection" by Domenica in honor of Guillaume and her second husband, the French state established it in the Musée de l'Orangerie.

This exhibition featuring about 70 works by 13 artists, selected from among the Jean Walter and Paul Guillaume Collection's 146 paintings, will be the first major showing of the Collection in Japan in 21 years. It will thus be a rare opportunity to experience the Collection and learn hidden stories behind it, while enjoying paintings by famed masters loved throughout the world.



Claude MONET, *Argenteuil*, 1875,
Oil on canvas, 56.0 x 67.0 cm,
Photo © RMN-Grand Palais (musée de
l'Orangerie) / Franck Raux / distributed by
AMF



Henri MATISSE, *Odalisque with Red Trousers*,
ca. 1924-25,
Oil on canvas, 50.0 x 61.0 cm,
Artwork © Succession H. Matisse
Photo © RMN-Grand Palais (musée de
l'Orangerie) / Michel Urtado / Benoit
Touchard / distributed by AMF



Amedeo MODIGLIANI, *Paul Guillaume, Novo Pilota*, 1915
Oil on card glued on plywood, 105.0 x 75.0 cm,
Photo © RMN-Grand Palais (musée de l'Orangerie) /
Hervé Lewandowski / distributed by AMF



André DERAÏN, *Harlequin and Pierrot*,
ca. 1924,
Oil on canvas, 175.0 x 175.0 cm,
Photo © RMN-Grand Palais (musée de
l'Orangerie) / Hervé Lewandowski /
distributed by AMF



Paul CÉZANNE, *Apples and Biscuits*,
ca. 1879-1880,
Oil on canvas, 45.0 x 55.0 cm,
Photo © RMN-Grand Palais (musée de
l'Orangerie) / Franck Raux / distributed by
AMF



Alfred SISLEY, *The Road to Montbuisson at
Louveciennes*, 1875,
Oil on canvas, 46.0 x 61.0 cm,
Photo © RMN-Grand Palais (musée de
l'Orangerie) / Thierry Le Mage /
distributed by AMF



Henri ROUSSEAU, *The Wedding Party*,
ca. 1905,
Oil on canvas, 163.0 x 114.0 cm,
Photo © RMN-Grand Palais (musée de
l'Orangerie) / Hervé Lewandowski /
distributed by AMF



Maurice UTRILLO, *Saint Peter's Church,
Montmartre*, 1914,
Oil on card, 76.0 x 105.0 cm,
Photo © RMN-Grand Palais (musée de
l'Orangerie) / Hervé Lewandowski /
distributed by AMF



Marie LAURENCIN, *Portrait of Mademoiselle
Chanel*, 1923,
Oil on canvas, 92.0 x 73.0 cm,
Photo © RMN-Grand Palais (musée de
l'Orangerie) / Hervé Lewandowski /
distributed by AMF

Admission

Adults	¥1,700 (1,500 / 1,600)
University and high school students	¥1,200 (1,000 / 1,100)
Junior high school students	¥ 700 (500 / 600)
Children under 12	Free
Seniors (65 and older)	¥1,600 *ID required. Only available at ticket counter in the museum.

*(/)=Advance / Group of 20 or more.

*For a group of 20 or more, reservation is required in advance.

*Advance tickets are available from June 1 (Sat.) until September 20 (Fri.), 2019 at the Museum Shop, Official website and the other Ticket Agencies.

*Visitors with disability and one person accompanying them are admitted free of charge.
(Please present certificate at the entrance.)

*The ticket also gives admission to the Exhibition of the Museum Collection for the same day.

General Information

Title:	30th Anniversary of the Yokohama Museum of Art Masterpieces from the Musée de l'Orangerie, Jean Walter and Paul Guillaume Collection
Dates:	September 21 (Sat.), 2019 - January 13 (Mon.), 2020
Open hours:	10:00 - 18:00 (10:00 - 20:00 on Fridays and Saturdays/ 10:00 - 21:00 on Sep.27, 28, Jan.10, 11, 12) *Admission until 30 minutes before closing.
Closed:	Thursdays (Except December 26), December 28 (Sat.), 2019 - January 2 (Thu), 2020
Venue:	Yokohama Museum of Art 3-4-1, Minatomirai, Nishi-ku, Yokohama 220-0012 TEL: +81(0)45 221 0300 FAX: +81(0)45 221 0317 URL: https://yokohama.art.museum/eng/

Organized by: Yokohama Museum of Art [Yokohama Arts Foundation],
Musées d'Orsay et de l'Orangerie, The Yomiuri Shimbun, TV Asahi Corporation

Supported by: Ambassade de France au Japon / Institut français du Japon

Sponsored by: Sampo Japan Nipponkoa Insurance Inc., Dai Nippon Printing Co., Ltd.,
Nomura Research Institute, Ltd., Mizuho Bank, Ltd.

In Cooperation with: Japan Airlines, Lufthansa Cargo AG., Tokyu Corporation, Minatomirai Line,
Yokohama Cable Vision Inc., Yokohama FM Broadcasting Co., Ltd.,
Metropolitan Expressway Co., Ltd.

Contact

Fujii (Ms.), Yamamoto (Ms.), Isshiki (Ms.), Umezawa (Ms.)

Public Relations, Yokohama Museum of Art

3-4-1, Minatomirai, Nishi-ku, Yokohama. 220-0012 JAPAN

TEL: +81(0)45 221 0319 FAX: +81(0)45 221 0317 **E-mail: pr-yama@yaf.or.jp**