

June 20, 2018

Monet's Legacy

Venue: Yokohama Museum of Art

Dates: July 14 (Sat.) - September 24 (Mon.), 2018

The Yokohama Museum of Art is proud to present *Monet's Legacy* from Saturday, July 14 to Monday, September 24, 2018.

Claude Monet (1840-1926) is heralded as a major Impressionist painter. About a century ago, in his final years, Monet created the summation of his life's work, his *Water Lilies* series designed as "Grand Decorations" for the Musée de l'Orangerie. Monet's extant paintings, created through his close examination of the landscape, continue to fascinate people today.

Energetic brushstrokes, reverberating colors, a gaze that grasped light's constant changes and single moments of atmosphere, compositions that immerse the viewer in the landscape, and images that expand beyond the picture plane... The multifaceted characteristics of Monet's works have stood the test of time and are continued in various forms by present-day artists.

This exhibition presents 25 paintings dating from Monet's earliest period to his final years, alongside 65 works including not only paintings but also prints, photographs and video works by 26 artists from later generations, to reveal the connections that link them across the years. We can look back on this painter from our position today and see that he surpasses his historical moniker of Impressionist Master as we discover yet new richness, new ongoing fascination in Monet's arts.

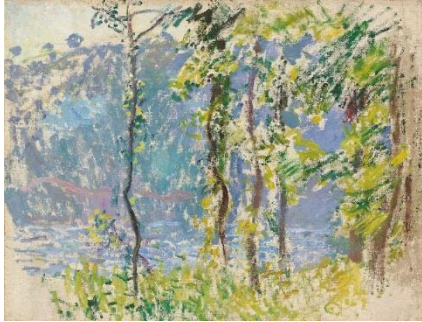
What is about Monet's work that makes it so compelling? We hope that this exhibition will provide answers to the question and that visitors to the exhibition will discover the fascination and diversity of contemporary art that reflects Monet.



Claude MONET (1840-1926)
Water Lilies
1906
oil on canvas
81.0×92.0cm
Yoshino Gypsum Co., Ltd.
(deposited at Yamagata Museum of Art)

Sections

I Towards a New Type of Painting

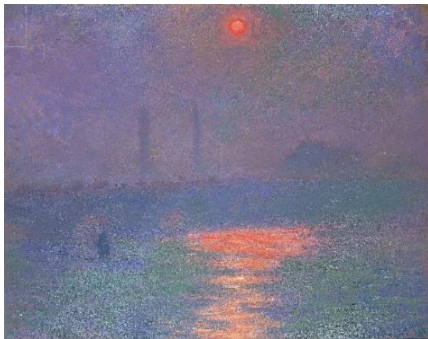


Claude MONET
Landscape, Villez
1883
oil on canvas
60.3×78.8cm
Private Collection
© Christie's Images /
Bridgeman Images



MARUYAMA Naofumi
puddle in the woods 5
2010
acrylic on cotton
227.3×181.8cm
Collection of the Artist
© Naofumi Maruyama
Courtesy of ShugoArts

II Looking at the Formless



Claude MONET
Sun in the Fog
1904
oil on canvas
71.0×91.5cm
Private Collection



Gerhard RICHTER
Abstract Painting (CR 845-8)
1997
oil on alu-dibond
100.0×90.0cm
21st Century Museum of
Contemporary Art, Kanazawa
Photo: Keizo Kioku
© Gerhard Richter 2018 (0005)
Image courtesy of 21st Century
Museum of Contemporary Art,
Kanazawa

III Homage to Monet



FUKUDA Miran
Monet's Water Lilies
2002
acrylic on canvas
mounted on panel,
with ready-made frame
86.3×116.5×8.3cm
Ohara Museum of Art,
Kurashiki



DOMOTO Hisao
Chain Reaction: for Claude Monet
2003
oil on canvas
130.0×390.0cm
Private Collection

IV Beyond the Frame



Claude MONET
Water Lilies with Reflections of Tall Grass
1914-17
oil on canvas
130.0×200.0cm
Nahmad Collection, Monaco



SUZUKI Risaku
Water Mirror 14, WM-77 [left], *Water Mirror 14, WM-79* [right]
2014
chromogenic print
each 120.0×155.0cm
Collection of the Artist
© Risaku Suzuki, Courtesy of Taka Ishii Gallery

Admission

Adults	¥1,600 (1,400 / 1,500)
University and High school students	¥1,200 (1,000 / 1,100)
Junior high school students	¥ 600 (400 / 500)
Children under 12	Free
Seniors (65 and Older)	¥1,500 *ID required. Only available at ticket counter in the museum.

*(/)= Advance/Group of 20 or more.

*For a group of 20 or more, reservation is required in advance.

*Free Admission for high school students and younger with valid IDs on Saturdays.

*Visitors with disabilities and one person accompanying them are admitted free of charge. (Please present a certificate at the entrance.)

*The ticket also gives admission to the Exhibition of the Museum Collection for the same day.

General Information

Title: *Monet's Legacy*
Dates: July 14 (Sat.) - September 24 (Mon.), 2018
Open hours: 10:00-18:00
*Open until 20:30 on September 14 (Fri.) and 15 (Sat.), 2018
*Admission until 30 minutes before closing.

Closed: Thursdays (except August 16, 2018)

Venue: Yokohama Museum of Art
3-4-1, Minatomirai, Nishi-ku, Yokohama 220-0012
TEL: +81(0)45 221 0300 FAX: +81(0)45 221 0317
URL: <http://yokohama.art.museum/eng>

Organized by: Yokohama Museum of Art , The Tokyo Shimbun, TV Asahi Corporation
Supported by: Ambassade de France au Japon / Institut français du Japon
Sponsored by: TOYOTA MOTOR CORPORATION, Mitsui Sumitomo Insurance Co., Ltd.,
MITSUMURA PRINTING CO., LTD.
In Cooperation with: JAPAN AIRLINES, Minatomirai Line, Yokohama Cable Vision Inc.,
Yokohama FM Broadcasting Co., Ltd., Metropolitan Expressway Co., Ltd.

Contact

Mr. Mizutani, Ms. Fujii, Ms. Isshiki
Public Relations, Yokohama Museum of Art
3-4-1, Minatomirai, Nishi-ku, Yokohama. 220-0012 JAPAN
TEL:+81(0)45 221 0319 FAX:+81(0)45 221 0317 E-mail: pr-yma@yaf.or.jp