

March 21, 2018

Yokohama Museum of Art Collection

March 24- June 24, 2018

Making a Collection: For the Future – Recent Acquisitions

Depicting People: Focus on Japanese Painting

This edition of the collection exhibition is made up of two sections.

In the first, *Making a Collection: For the Future – Recent Acquisitions*, we present a group of modern and contemporary Japanese art works, which in recent years have displayed an increasing depth, arranged according to four themes with an emphasis on acquisitions from the '10s that are being shown for the first time. In the photography gallery, we feature three series by Tsuchida Hiromi dealing with Hiroshima along with Ishikawa Naoki's *ARCHIPELAGO* series.

In accordance with the City of Yokohama's collection policy, the Yokohama Museum of Art submits a list of potential acquisitions, which are considered in an annual meeting of the Acquisition Review Committee. In addition to obtaining works from collectors and citizens, some acquisitions were made by artists for exhibitions at the museum. And in some cases, a curator's sustained research activities lead to the acquisition of a sizable group of works. Collecting outstanding works, introducing them from a variety of perspectives, and protecting them in an appropriate environment with a view to the future are all part of the museum's mission.

In the second section, *Depicting People: Focus on Japanese Painting*, we present a diverse range of modern and contemporary works focusing on the human form. People have been an irresistible motif for artists throughout time and all over the world. As is clear from the *NUDE: ART FROM THE TATE COLLECTION* exhibition, Western artists were captivated by nudes and this eternal theme has persisted throughout the ages. In Japan, Kuroda Seiki's *Morning Toilette*, which sparked a controversy surrounding nudes in 1895, marked the start of a struggle to depict the naked form according to Japanese natural and spiritual qualities. Even today, many artists try to meet the challenge of this subject. In addition to nudes, this section includes portraits depicting the features and characteristics of particular people, anonymous portraits that act as a mirror for the viewer's mental state, and pictures of historical figures in which modern Nihon-ga (Japanese-style) painters set out to attain a certain ideal of beauty. We hope that you will consider the views of human beings and history that are contained in these works.

Left:
ARAI Kanpo, *Saint Ippen*, ca.1915
color on silk, urahaku(lining with gold foil
on the reverse side)
239.0x92.6cm

Right:
NAKAJIMA Kiyoshi, *Ikuyo*, 1934
color on silk
125.0x41.5cm
donated by NAKAJIMA Hiromitsu



OGURA Yuki
A Beautiful Evening
1957
color on paper
140.0x97.0cm

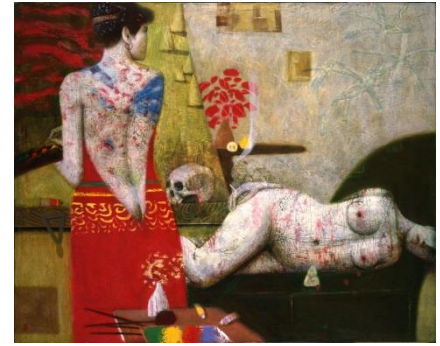


ISHIKAWA Naoki
ARCHIPELAGO: Okinawa-jima
2009
chromogenic print, 48.0x59.0cm
donated by the artist



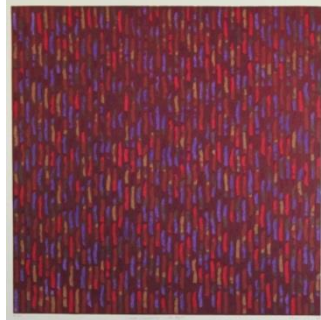


Left:
SHIMOMURA Kanzan
Copy of J.E. Millais's *Knight Errant*
1904
color on paper
101.0x75.0cm
donated by HARA Noriyuki and HARA Etsuko



Right:
SASAKI Yutaka
Nude and Garment
1993
oil on canvas
130.3x162.1cm
donated by the artist

YOSHIDA Ayomi
LINEAR COMPOSITION L25-B.B.M.
1984
color woodblock print on paper
59.9x 59.9cm
donated by the artist



NARA Yoshitomo
Miss Spring
2012
acrylic on canvas
227.0x182.0cm
©Yoshitomo Nara



Outline

Yokohama Museum of Art Collection March 24- June 24, 2018

Making a Collection: For the Future – Recent Acquisitions

Depicting People: Focus on Japanese Painting

Dates: March 24(Sat.) - June 24(Sun.), 2018

Open hours: 10:00-18:00

*Open until 20:30 on May 11(Fri.) and June 8(Fri.), 2018

*Admission until 30 minutes before closing.

Closed: Thursdays (except May 3, 2018), May 7, 2018

Organized by: Yokohama Museum of Art [Yokohama Arts Foundation]

Ticket

Adults	¥500 (¥400)
University and High school students	¥300 (¥240)
Junior high school students	¥100 (¥80)
Children under 12	Free

* ()=Group of 20 or more (pre-booking required)

* Free Admission for high school and younger student with valid ID on every Saturday.

* Visitors with disabilities and one person accompanying them are admitted free of charge. (Please present a certificate at the entrance.)

* Collection gallery is available with a ticket of Special Exhibition.

YOSHIDA Chizuko
Snow in the Midnight
1991
zinc etching and woodblock
print on paper
102.0x42.0cm
donated by the artist



Contact

Ms. Suzuki, Ms. Fujii, Ms. Kaito, Mr. Yamazaki / Public Relations, Yokohama Museum of Art

3-4-1, Minatomirai, Nishi-ku, Yokohama, 220-0012 JAPAN

TEL:+81(0)45 221 0319 FAX:+81(0)45 221 0317 E-mail: pr-yma@yaf.or.jp