

Takamine Tadasu

T O O F A R T O S E E

January 21 – March 20, 2011

Yokohama Museum of Art



The Yokohama Museum of Art will hold the first large-scale solo exhibition in the greater metropolitan area for contemporary artist and stage director Takamine Tadasu (born 1968).

Takamine has exhibited works not only in two- and three-dimensions and in video, but also in installation, performance, and productions making free use of a wide range of media, including sound, images, and computer-controlled mechanisms. Using various forms of expression, he has continuously exhibited works with a strong message. Due to his many entries in international exhibitions such as the 2003 Venice Biennale and the Busan Biennale in 2004, he has gained positive recognition internationally. In a very large space resembling a theater at the second Yokohama Triennale in 2005, he presented a video installation entitled *Kagoshima Esperanto* (fig.1), in which the shapes of words from the dialect of his native Kagoshima Prefecture and words from Esperanto, which was created to be an international language, were pressed into images and soil. This work in a combination of light, sound, and artistic objects gathered much attention.

Takamine takes the absurdity of society as a guide in his work. A criticism of globalism's US-centric progress is abstractly expressed in *God Bless America*, in which people grapple with large masses of clay (fig. 2). Drawing on his personal romantic relationship, *Baby Insa-dong* (2004, video installation) touches on issues in discriminatory feelings affecting foreign residents in Japan. *Good House, Nice Body* (2010, video installation) raises awareness about the decline in traditional housing architecture due to the spread of prefabrication. These are some of Takamine's works, which draw the eye to the latent contradictory and illogical aspect of human beings, exhibited in critical, but also abundantly humorous works of art.

In this exhibition, he will show not only his recent works, but also new body of works he makes in Yokohama. The subtitle, "Too Far to See" is a phrase frequently expressed by visitors in crowded exhibitions. Although art museums are supposed to guard freedom of expression, ironically enough, they impair various aspects of freedom of expression. In his work, Takamine endeavors to highlight this contradiction. The results of this exploration are yet to be revealed, but the work taking shape in front of us will no doubt be something unexpected and stimulating.



## Artists and Works

### ▶ Takamine Tadasu

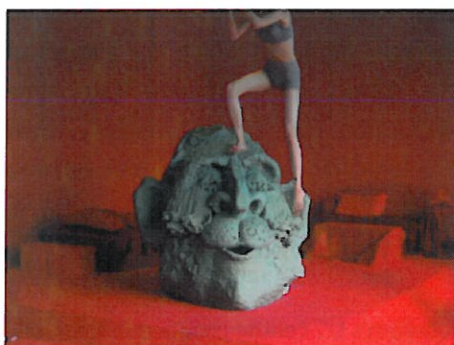


Born in 1968 in Kagoshima and currently lives and works in Shiga. He graduated with a major in lacquer(Japan) from the Craft Division of the Kyoto City University of Arts and attended the International Academy of Media Arts and Sciences in Gifu Prefecture. Solo exhibitions include "A Lover From Korea" in 2003 (NPO for the Tanba Manganese Memorial), "TAKAMINE Tadasu 'BIG REST' Gardening for the Future 1095m" in 2008 (Sendai Mediateque), "The SUPERCAPACITORS" in 2010 (Marugame Genichiro-Inokuma Museum of Contemporary Art), and "Good House, Nice Body" (21st Century Museum of Contemporary Art, Kanazawa, Long-term Project Room). He participated in the 2003 Venice Biennale, the 2004 Busan Biennale, the 2005 Yokohama Triennale, the 2010 Aichi

Triennale as well as a number of international exhibitions and many group exhibitions both domestically and abroad. His collaborations with dance and theater are many. From 1993 to 1997, he was active as a performer for Dumb Type, and he has worked on scenery and stage images for director and coreographer Kanamori Jo / Terada Misako. He has also collaborated with musician Otomo Yoshihide. In recent years, he is active as a stage director, and present stage performances.

### ▶ Representative Works

Exhibition includes Takamine's recent works in 2000s. Additionally, he creates new installation, during his residency at Yokohama.



*God Bless America* 2002, video (8'18") Fig.2

This video work created using clay animation was motivated by criticism of the US war in Afghanistan following the 9-11 attacks. A large sculpture made from two tons of clay moves and appears to sing "God bless America." The statue is presented in contrast to the human figures struggling to move it. Considered representative of Takamine's work, many art museums have this piece in their collections. This is planned to be shown in this exhibition.



*Kagoshima Esperanto*

2005, video installation (mixed media) Fig.1

This work was entered into the second Yokohama Triennale in 2005. Soil was spread throughout a large space and a variety of objects were installed. The result was a video installation, in which characters and images written into the earth reflected the dialect of Kagoshima and the international language Esperanto. By juxtaposing the dialect of his home prefecture with an artificially created language, Takamine abstractly expressed issues of globalism and localism.



## Event and Discount Services

- ▶ **“Melody♥Cup”** A Japan-Thailand Performance Collaboration directed by Takamine Tadasu  
Organized by: “Melody♥cup” office Cosponsor: TPAM in Yokohama

“Melody♥Cup” is a groundbreaking stage production directed by cutting-edge contemporary artist and stage director Takamine Tadasu. It will be the first genuine stage performance in the greater metropolitan area.

Led by Takamine, “Melody♥Cup” gathers young artists and performers from Japan and Thailand to “create the future together” on stage. The performance was premiered in 2009 in AI HALL, Hyogo, Japan. In October 2010, the team took residence at Patravadi Theatre to recreate the production and share it with the Bangkok audience. And the stage becoming more powerful will be also performed in 2011 in Yokohama.

Filled with lightness and humor, “Melody♥Cup” explores the difficulties of communication among individuals and people from different cultures to present an intriguing and exciting theatre work that transverses the realms of visual and performing arts.

Venue: Yokohama Red Brick Warehouse

Date/ Time: 15:00-/19:30-, Feb. 19, 14:00-/18:00-, Feb. 20, 2011

Advance ticket : General ¥3,200/

Student & Youth ¥2,200

(¥500 more at the door)

Advance ticket will be available from Dec. 3, 2010

Ticket and More Information

“Melody♥cup” office Tel. +81(0)75-252-5655

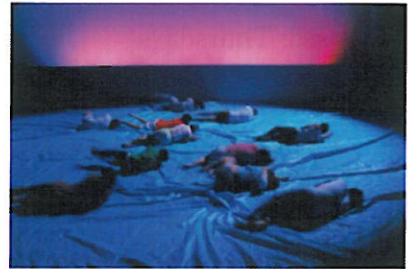


PHOTO : Hiroto Takezaki

### Combination discount for “Takamine Tadasu : Too Far To See” and “Melody♥Cup”!

Upon presentation of the ticket of “Melody♥cup”, ¥200 discount apply to normal admission fee of “Takamine Tadasu : Too Far To See”. And upon presentation of the ticket stub from this exhibition, 200 yen refund apply to normal fee of a ticket sold on the day of performance. (One ticket is applicable for the one-time admission of one person only.)

### ▶ Special Discount Service

#### Mori Art Museum + Tokyo Opera City Art Gallery + Yokohama Museum of Art

The leading edge of contemporary Japanese art all at once.

A combination discount for the Odani Motohiko exhibition, the Sone Yutaka exhibition, and the Takamine Tadasu exhibition.

This winter, concurrent with the Takamine Tadasu Exhibition, Odani Motohiko and Sone Yutaka’s exhibitions will also be held at the Mori Art Museum and Tokyo Opera City Art Gallery, respectively. They are all participants in the Venice Biennale and various international exhibitions and bearers of the next generation of the Japanese contemporary art world. Collectively enjoy these challenging exhibitions displaying the creativity of these artists’ serious confrontation with traditional artistic expression and history as they make free use a large variety of media.

Upon presentation of the ticket stub from this exhibition at either of the two other museums, the following discounts apply.

- One ticket stub is applicable for the one-time admission of one person only for each exhibition.
- not applicable for other exhibitions
- may not be used in combination with other discounts

#### Mori Art Museum “Odani Motohiko: Phantom Limb”

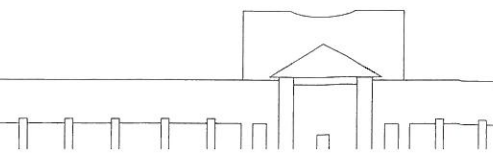
November 27, 2010 - February 27, 2011 (open everyday during the exhibition period)

Admission: General 1,500 yen → 1,300 yen / High School and University Student 1,000 yen → 800 yen / Child(Age 4 to Junior High School) 500 yen → 300 yen

#### Tokyo Opera City Art Gallery “SONE Yutaka: Perfect Moment”

January 15 - March 27, 2011 (closed Mondays, Feb.13 and Mar.22)

Admission: General 1,000 yen → 800 yen / High School and University Student 800 yen → 600 yen / Elementary and Junior High School Student 600 yen → 400 yen



**General Information**

**Takamine Tadasu : Too Far To See**

**Date: January 21 – March 20, 2011**

**Venue: Yokohama Museum of Art**

3-4-1, Minatomirai, Nishi-ku, Yokohama 220-0012 JAPAN

TEL:+81(0)45-221-0300 FAX:+81(0)45-221-0317

<http://www.yaf.or.jp/yama/>

Open Hours: 10:00 - 18:00 (Open until 20:00 on Fridays )

Closed: Thursdays

Admission: General 1,100 (900/1,000) yen / High School and University Student 700 (500/600) yen / Junior High School Student 400 (200/300) yen / Elementary School Student and Younger: Free.

\* ( ) = Advance / Group of over 20 people (pre-booking required).

\* Admission for high school and younger students is free every Saturday (student ID and student handbook required).

\* For further information in English, please visit our website.

Organized by:

Yokohama Museum of Art [Yokohama Arts Foundation-Sotetsu Agency-Mitsubishi Estate Building Management JV]

Supported by: City of Yokohama-Civic Bureau

In Cooperation with:

NEC Display Solutions, Ltd. / Koganecho Area Management Center / The Organizing Committee for the Yokohama Triennale / Yokohama Triennale Supporters Office / Minatomirai Line / Yokohama Cable Vision Inc. / Yokohama FM Broadcasting Co., Ltd. / Metropolitan Expressway Co., Ltd.

Grants from:

Japan Foundation for Regional Art-Activities (JAFRA) / Asahi Beer Arts Foundation

**MEDIA ENQUIRIES**

Public Relations, Yokohama Museum of Art  
3-4-1, Minatomirai, Nishi-ku, Yokohama 220-0012 JAPAN  
TEL. +81(0)45-221-0319 FAX. +81(0)45-221-0317  
e-mail: [pr-yama@yaf.or.jp](mailto:pr-yama@yaf.or.jp)

