

The Spirit of KUNIYOSHI

– From Ukiyoe to Japanese Modern Paintings

November 3, 2012 – January 14, 2013
Yokohama Museum of Art

Featuring the most prominent ukiyoe painter in the late Edo period, Utagawa Kuniyoshi (1797-1861), as the originator, this exhibition presents how his innovative forms of expression were inherited and further developed by his disciples and other painters. This will be explored through showing Japanese-style paintings, oil paintings, watercolors, prints, and published books, created between the late Edo and Early Showa period. It will trace a wide range of expressions in the lineage of Kuniyoshi, with the central axis on the styles of Tsukioka Yoshitoshi, Mizuno Toshikata, Kaburaki Kiyokata, and Ito Shinsui. A total of 250 works will be shown (partly replaced in the second half), sectioned into four chapters.



Utagawa Kuniyoshi (Ichiyūsai),
Brave Woman, Okane in Ōmi Province (Ōmi no kuni no yūfu Okane),
 C.1831-32, Horizontal ōban format, Woodblock print
 *exhibited until Dec.5



Tsukioka Yoshitoshi (Taiso), *Looks Painful*,
 from the Series of "Thirty-two Aspects of Customs and Manners,"
 1888, Ōban format, Woodblock print,
 Yokohama Museum of Art [Gift of Mr.Yukiteru Yamamura]



Utagawa Kuniyoshi (Ichiyūsai), *Miyamoto Musashi Kills an Enormous Whale*, C.1847, Ōban format, triptych, Woodblock print
 *exhibited from Dec.7



Utagawa Kuniyoshi (Ichiyūsai),
Votive Picture of a Lonely House (Hitotsutuya), 1855, 228.2×372.0cm
 Color on wood, framed, Sensō-ji

— Special offers**• Free admission on November 3rd!**

To mark the 23rd anniversary of the opening of the museum, admission will be free to this exhibition
- our 100th special exhibition to be organized - on Nov.3 !

• Family discount

A special half price offer for parents accompanying their children on the following weekends:
December 8, 9, 15, 16, 22, 23, and 24

• Kimono discount offer

A special discount of 100 yen for visitors dressed in Kimono!

• Kuniyoshi, Yoshitoshi, Kiyokata... A special conjunction offer

Special discounts for visitors presenting the ticket stub of our exhibition at the following museums. Also, with the ticket stub of those exhibitions, 200 yen discount will be applied to the admission of our exhibition.

UKIYO-E ŌTA MEMORIAL MUSEUM OF ART**“Tsukioka Yoshitoshi 120th Memorial Retrospective”**

[1st term] October 2 – 28 [2nd term] November 1 – 25, 2012

(Closed on Mondays, October 9 *except October 8)

200 yen off on each admission ticket

Kamakura City Kaburaki Kiyokata Memorial Art Museum**“A Lingerin Scent of the Edo Period”**

November 3 – December 9, 2012

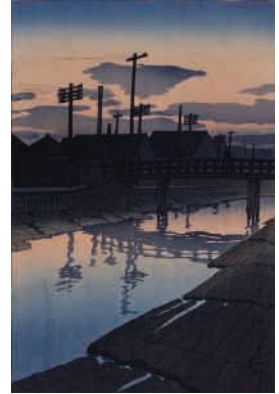
(Closed on Mondays, November 6)

50 yen off on each admission ticket

*Discount applies for one person presenting one ticket stub on one occasion at each of the other exhibitions.

*This offer cannot be combined with any other discount.

*For more information please contact each museum.



Kawase Hasui, *Kiba at Dusk* from the Woodblock Print Album “Twelve Scenes of Tokyo”. 1920, 36.9×24.2cm, Woodblock print, Yokohama Museum of Art



Kaburaki Kiyokata, *Seven Spring Herbs*, c.1918, 139×48cm, Color on silk, Yokohama Museum of Art

— Ticket

Admission: Adult: ¥1,200 (1,100)

High School and University Student: ¥800 (700)

Junior High School Student: ¥400 (300)

Elementary School Student and Younger: Free

*() = Advance / Group of over 20 people (pre-booking required)

*Admission for high school and younger student is free every Saturday. (Valid student ID and student handbook required)

*Admission is free for visitors with physical disability certificate and one accompanying person.

*Advance tickets are on sale at the Museum Shop and Seven Ticket (Seven-code: 018-826) until Friday, November 2, 2012.

— General Information**The Spirit of KUNIYOSHI****– From Ukiyoe to Japanese Modern Paintings**

Dates: November 3, 2012 – January 14, 2013

Open hours: 10:00-18:00 (Last admission at 17:30)

Closed on Thursdays, December 29 – January 3

Venue: Yokohama Museum of Art

3-4-1, Minatomirai, Nishi-ku, Yokohama 220-0012

Tel: 045-221-0300, FAX: 045-221-0317

<http://www.yaf.or.jp/yma/>

Organized by: Yokohama Museum of Art [Yokohama Arts Foundation-Sotetsu Agency-Mitsubishi Estate Building Management JV], Nikkei Inc.

Supported by: The City of Yokohama, JAPAN BROADCASTING CORPORATION YOKOHAMA STATION

In Cooperation with: Minatomirai Line, Yokohama Cable Vision Inc., Yokohama FM Broadcasting Co., Ltd., Metropolitan Expressway Co., Ltd.

Special cooperation: Kamakura City Kaburaki Kiyokata Memorial Art Museum, GALLERY BENIYA, The National Museum of Modern Art, Tokyo

— Contact**Public Relations, Yokohama Museum of Art**

3-4-1, Minatomirai, Nishi-ku, Yokohama. 220-0012 JAPAN

TEL: +81 (0)45 221 0319 FAX: +81 (0)45 221 0317 e-mail: pr-yma@yaf.or.jp